

# IL CARNEVALE DI VENEZIA

1



VIOLINO PRINCIPALE

N. PAGANINI Op. 40.

Nº 5. delle Opere postume.



23795. R R.

Giuseppe Gaccetta

VIOLINO PRINCIPALE

3<sup>za</sup> VAR.

Musical notation for the 3<sup>za</sup> variation, consisting of four staves of music in G major and 6/8 time. The first two staves include trills marked "tr" and a dynamic marking "f".

4<sup>ta</sup> VAR.

Musical notation for the 4<sup>ta</sup> variation, consisting of four staves of music in G major and 6/8 time, featuring a complex rhythmic pattern of eighth and sixteenth notes.

5<sup>ta</sup> VAR.

Musical notation for the 5<sup>ta</sup> variation, consisting of one staff of music in G major and 6/8 time, featuring a triplet pattern.



VIOLINO PRINCIPALE

The main musical score consists of five staves of music. The key signature is two sharps (F# and C#), and the time signature is 3/4. The music features a complex melodic line with many slurs and accents. The first staff includes several triplet markings (indicated by a '3' below the notes). The second staff continues the melodic development with similar phrasing. The third staff shows a continuation of the intricate melodic patterns. The fourth and fifth staves conclude the main section with a final melodic flourish.

6<sup>ta</sup> VAR.

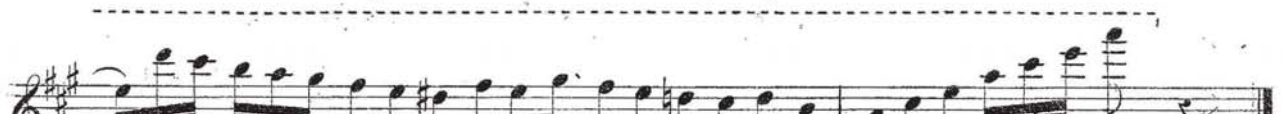
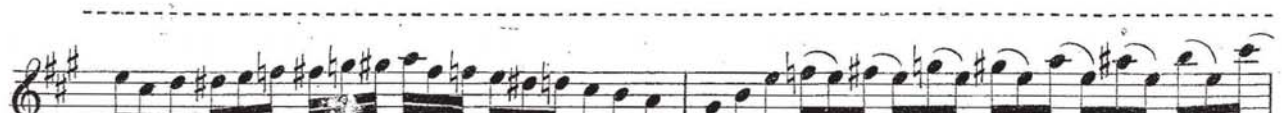
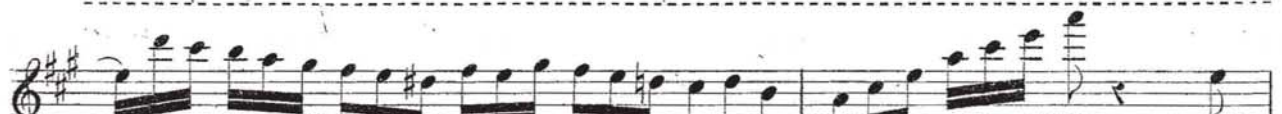
The 6th variation is marked with a forte 'f' dynamic and a 6/8 time signature. It consists of five staves of music. The first staff begins with a strong accent and a triplet. The second staff features a dense, rapid sixteenth-note passage. The third staff continues with similar rhythmic intensity. The fourth and fifth staves show a continuation of the variation's complex rhythmic and melodic structure, ending with a final triplet.

VIOLINO PRINCIPALE

4

8<sup>a</sup>

7.<sup>ma</sup> VAR.



8.<sup>va</sup> VAR.



25795. R R.

Giuseppe Gaccetta



VIOLINO PRINCIPALE

The main musical score consists of six staves of music in treble clef, key signature of two sharps (F# and C#), and 3/4 time. The music features a complex rhythmic pattern with many sixteenth and thirty-second notes, often beamed together. There are several measures with rests, and the piece concludes with a double bar line.

9<sup>na</sup> VAR. <sup>4<sup>ta</sup> Corda</sup>

The 9th variation is marked with a dynamic of *f* and a > symbol. It is in treble clef, key signature of two sharps, and 6/8 time. The notation includes many sixteenth notes, some with accents (>), and triplet markings (3) over groups of notes. The piece ends with a double bar line.

VIOLINO PRINCIPALE

10<sup>ma</sup> VAR. 



VIOLINO PRINCIPALE

First staff of music, treble clef, key signature of two sharps (F# and C#), 7/8 time signature. It begins with a melodic phrase and ends with four measures of pizzicato chords, each marked with a '0' above the notes and the word 'pizz.' below.

Second staff of music, treble clef, key signature of two sharps, 7/8 time signature. It continues the melodic line and concludes with five measures of pizzicato chords, each marked with a '0' above the notes and the word 'pizz.' below.

Third staff of music, treble clef, key signature of two sharps, 7/8 time signature. It features a melodic phrase with a slur over the final notes, followed by three measures of pizzicato chords, each marked with a '0' above the notes and the word 'pizz.' below.

Fourth staff of music, treble clef, key signature of two sharps, 7/8 time signature. It continues the melodic line and ends with eight measures of pizzicato chords, each marked with a '0' above the notes and the word 'pizz.' below.

12.<sup>ma</sup> VAR.   
Fifth staff of music, treble clef, key signature of two sharps, 6/8 time signature. It begins with a triplet of eighth notes and continues with a melodic line. The word '4<sup>ta</sup> Corda' is written above the staff on the right side.

Sixth staff of music, treble clef, key signature of two sharps, 7/8 time signature. It features a melodic line with slurs and triplets. The word '8<sup>a</sup>' is written above the staff, indicating the eighth finger.

Seventh staff of music, treble clef, key signature of two sharps, 7/8 time signature. It continues the melodic line with slurs and triplets. The words '4<sup>ta</sup> Corda' and '8<sup>a</sup>' are written above the staff.

Eighth staff of music, treble clef, key signature of two sharps, 7/8 time signature. It features a melodic line with slurs and triplets.

Ninth staff of music, treble clef, key signature of two sharps, 7/8 time signature. It continues the melodic line with slurs and triplets. The word '8<sup>a</sup>' is written above the staff.

Tenth staff of music, treble clef, key signature of two sharps, 7/8 time signature. It concludes the melodic line with slurs and triplets. The word '8<sup>a</sup>' is written above the staff.

23795, R R.

Giuseppe Gaccetta

VIOLINO PRINCIPALE

13.<sup>ma</sup> VAR.

The 13th variation consists of three staves of music. The first staff begins with a treble clef, a key signature of two sharps (F# and C#), and a 6/8 time signature. The music is characterized by a steady eighth-note accompaniment in the lower register, with a more active melody in the upper register. The second and third staves continue this texture, with some melodic variation and occasional rests.

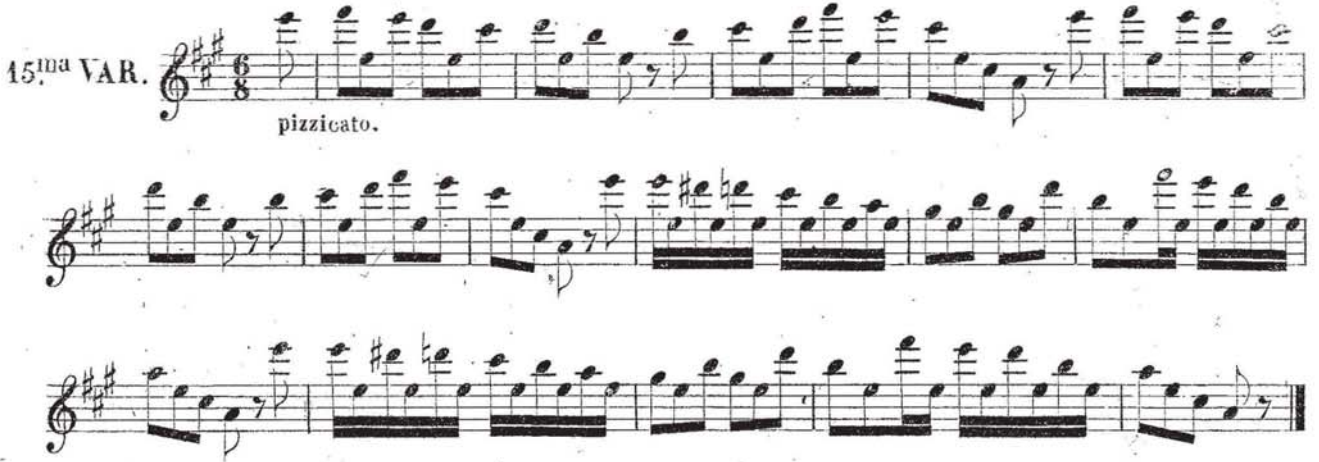
14.<sup>ma</sup> VAR.

4.<sup>ta</sup> Corda - - - - -

The 14th variation is an eight-staff piece. It begins with a treble clef, a key signature of two sharps, and a 6/8 time signature. A dynamic marking of *f* (forte) is present at the start. The notation includes a variety of rhythmic patterns, such as eighth-note runs and sixteenth-note passages. A significant feature is the use of the fourth string, indicated by the '4.<sup>ta</sup> Corda' marking and the placement of notes on the lowest line of the staff. The piece concludes with a double bar line.



VIOLINO PRINCIPALE

15<sup>ma</sup> VAR. 

pizzicato.

16<sup>ma</sup> VAR. 

tr

tr

tr

tr

Ponticello

Ponticello

17<sup>ma</sup> VAR. *f*

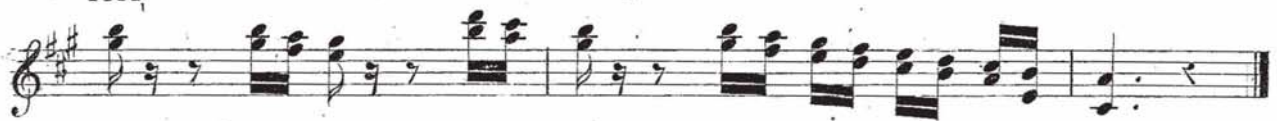
8<sup>a</sup>

18<sup>ma</sup> VAR. *pizzicato.*

3



VIOLINO PRINCIPALE



### VIOLINO PRINCIPALE

Come eco.

20.<sup>ma</sup> VAR.

The 20th variation consists of six staves of music. The first staff begins with the instruction "Come eco." and features several eighth-note patterns with "8<sup>a</sup>" annotations above them. The second and third staves continue these patterns, with the third staff including the instruction "doppia corda." below the notes. The fourth and fifth staves show more complex rhythmic figures, with "8<sup>a</sup>" annotations and slurs. The sixth staff concludes the variation with a final flourish and "8<sup>a</sup>" annotations.

FINALE.

The finale section consists of four staves of music. The first staff begins with a forte dynamic marking "ff" and features a series of eighth notes. The second and third staves continue with similar rhythmic patterns, with the third staff including a "6" annotation above a sixteenth-note figure. The fourth staff concludes the piece with a final flourish, including a "41" annotation above a sixteenth-note figure and "8<sup>a</sup>" annotations. The word "FINE." is printed at the end of the fourth staff.